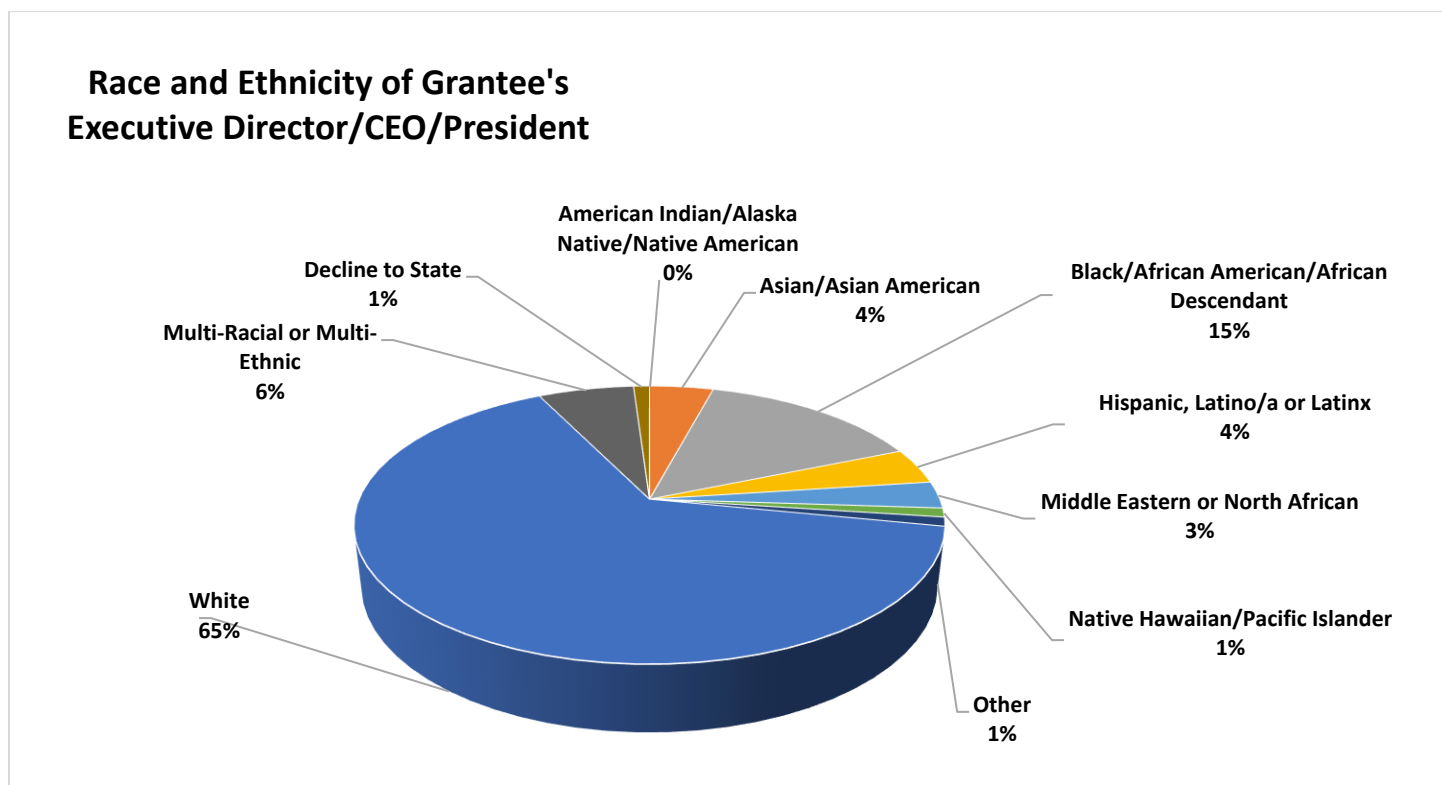


Public Welfare Foundation Diversity Data from 2016-2017

Public Welfare Foundation is making strategic efforts to promote racial equality across all aspects, including grantmaking. As the communities our grantees serve become increasingly diverse, we want to better understand the composition and organizational make-up of our grantees. We believe this will encourage us all to think about the importance of organizational diversity for our collective racial justice goals.

In October 2018, the Foundation collected racial and ethnic diversity data from 2017 grantees as well as 2016 grantees with a grant cycle of more than 12 months. The survey was sent out to 124 grantees and 98 grantees responded, a 79 percent response rate. 2018 was the first year we requested this information from grantees.

The chart below shows the race and ethnicity of Public Welfare Foundation grantees' top leadership position.



The following two charts show racial and ethnic representation within grantees' boards and other leadership staff. For example, 89 percent of the respondents have at least one White board member.

